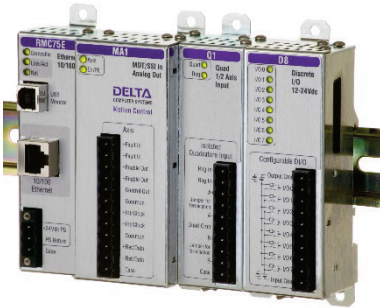


# RMC70 Series

## One- and Two-Axis Motion Controllers

DATASHEET



**The RMC70 Base module includes a CPU, communications, and one or two motion axes. Up to four Expansion modules can be added (e.g. analog inputs and DI/O).**

The RMC70 Series motion controllers offer a valuable combination of performance and ease of use for one- and two-axis systems.

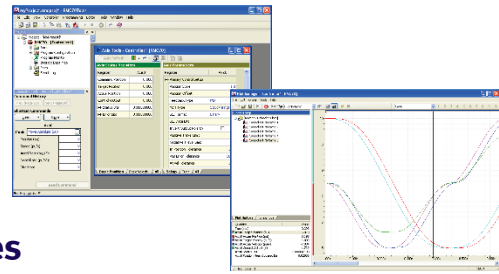
With powerful control modes—including dual-loop position-pressure algorithms—and multiple feedback types, the RMC70 Series provides optimum control to a wide range of hydraulic, electric, and pneumatic position and position–pressure/force applications.

Communications with popular PLCs and HMIs is efficient, with support for numerous protocols, easy-to-use address mapping features, and mirroring of PLC addressing. Time-critical sequences can be offloaded from the PLC into the RMC70's flexible User Programs.

A full set of motion parameters, including acceleration and velocity feed forwards and separate directional gains, delivers smooth, precise motion to boost throughput, improve quality, and extend machine life.

Command-based programming speeds development and reduces long-term software maintenance. Advanced graphing and diagnostic capabilities can be used to troubleshoot the entire motion system. RMCTools software with informative help is downloadable from [deltamotion.com](http://deltamotion.com).

**The RMC70 Series is backed by a company legacy of more than 40 years of excellent product support. Responsive 24/7 customer service is just a telephone call away.**



## Features

### Setup and Programming

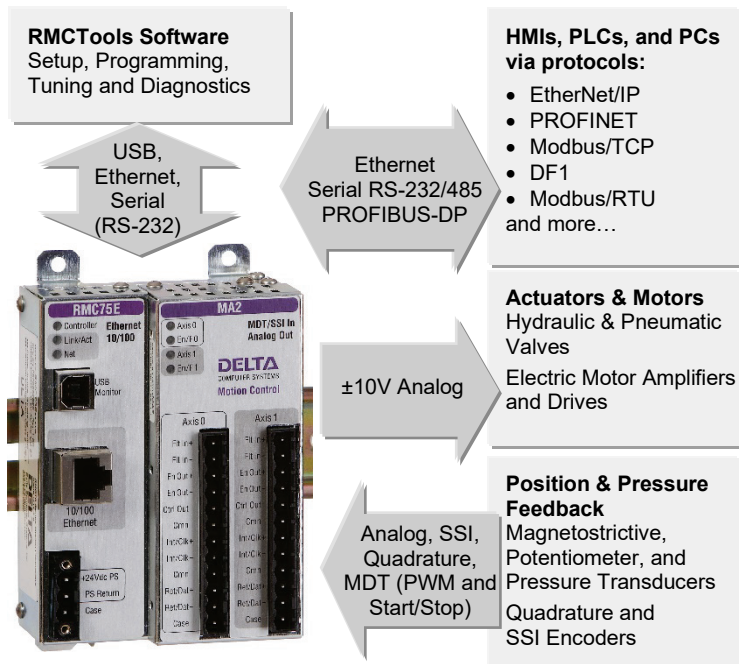
- ▲ Command-based—minimal program development and maintenance
- ▲ Flexible User Programs—advanced step sequencer with user-named variables and mathematical expressions
- ▲ Extensive, context-sensitive online help

### Control Algorithms

- ▲ Position, velocity, pressure, force, position–pressure, position–force, velocity–pressure, velocity–force, active damping
- ▲ Full parameter set supports high-performance motion control

### Tuning and Diagnostics

- ▲ Powerful motion graphing and event logging for optimizing the entire motion system
- ▲ Event Log shows real-time activity



The DIN-rail mountable RMC75 Base module is just 3.22" x 5.00"

**DELTA  
MOTION**

Connect. Control. Optimize.  
[deltamotion.com](http://deltamotion.com)

# RMC70 Series Ordering Information

## RMC70 Series Part Numbers

### RMC70 Base Module

**RMC75E-MA1**

CPU Module \_\_\_\_\_

- RMC75E** = RMC75 with Ethernet communications and USB monitor port ..... p. 6
- RMC75P** = RMC75 with PROFIBUS-DP communications and RS-232 monitor port ..... p. 6
- RMC75S** = RMC75 with serial RS-232/485 communications and RS-232 monitor port ..... p.7

Axis Module \_\_\_\_\_

- AA1** = Analog input ( $\pm 10V$  or 4-20mA),  $\pm 10V$  analog control output, 1 axis ..... p.9
- AA2** = Analog input ( $\pm 10V$  or 4-20mA),  $\pm 10V$  analog control output, 2 axes ..... p.9
- MA1** = Magnetostrictive (Start/Stop, PWM) or SSI input,  $\pm 10V$  analog control output, 1 axis ..p.10
- MA2** = Magnetostrictive (Start/Stop, PWM) or SSI input,  $\pm 10V$  analog control output, 2 axes .p.10
- QA1** = Quadrature encoder input (5V differential),  $\pm 10V$  analog control output, 1 axis .....p.11
- QA2** = Quadrature encoder input (5V differential),  $\pm 10V$  analog control output, 2 axes .....p.11

### RMC70 Expansion Modules

**EXP70-AP2**

Expansion Module \_\_\_\_\_

- A2** = 2 analog reference inputs ( $\pm 10V$  or 4-20mA) ..... p.13
- AP2** = 2 analog inputs ( $\pm 10V$  or 4-20mA) for position-pressure and position-force control ..... p.13
- D8** = 8 discrete I/O, 12-24Vdc, software configurable ..... p.14
- Q1** = 1/2-axis quadrature reference input (5V differential) ..... p.15

## Accessories and More

- Mounting Dimensions ..... p. 18
- Voltage-to-Current Converters..... p. 19
- USB-to-Serial Cable..... p. 19
- Cable Assemblies ..... p. 19
- Terminal Blocks ..... p. 19

## Example Part Numbers

### RMC75E-MA2

Ethernet communications with 2 axes of magnetostrictive (Start/Stop or PWM) or SSI feedback.

### RMC75P-QA1

PROFIBUS communications with 1 axis of quadrature encoder feedback.

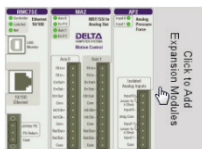
### EXP70-D8

8 discrete I/O

## Online Configuration Tool

Create your own RMC70 controller and request a quote!

Go to [deltamotion.com](http://deltamotion.com) and choose **Request a Quote Online**.



## Company Profile

Delta Computer Systems, Inc. also doing business as Delta Motion, manufactures motion controllers and other industrial controls providing high-performance automation solutions to a wide range of industries.

## RMCTools

### Setup, Tuning, Programming, and Diagnostics Software

RMCTools is a powerful motion control software package for setting up, tuning, troubleshooting, programming, and controlling all features of Delta Motion's RMC70, RMC150, and RMC200 motion controllers from a PC.

RMCTools communicates with the RMC70 via USB, Ethernet, or serial RS-232. The method of connection depends on the RMC70 CPU module. See the CPU section of the datasheet.

RMCTools is available for download from Delta Motion's website at [deltamotion.com](http://deltamotion.com).

#### Supported Operating Systems:

Windows® 11/10/8.1/7

## RMCLink

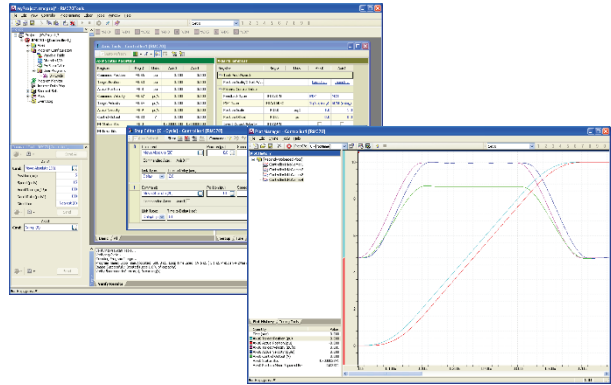
The RMCLink ActiveX Control and .NET Assembly enables full serial RS-232 or Ethernet communications from Windows-based PCs to the RMC70. RMCLink supports many languages, such as Visual Basic, C++, C#, VBScript, and VBA (Microsoft® Excel, etc.).

RMCLink comes with sample projects to help you get started quickly. The help includes detailed walk-throughs and code snippets.

RMCLink is available for download from Delta Motion's website at [deltamotion.com](http://deltamotion.com).

## Drivers for LabVIEW™

VIs created by Delta Motion for use with LabVIEW™ software provide full-fledged examples including plot uploading and trending. The VIs are available from the Instrument Driver portion of National Instruments' website and from [deltamotion.com](http://deltamotion.com).



## RMCTools Features

### Setup

#### ▲ Wizards

Easy-to-use wizards include New Project, New Controller, Scale & Offset, and Autotuning.

#### ▲ Full Parameter Set

Monitor all axis status registers and modify parameters.

### Tuning and Diagnostics

#### ▲ Plots

Plot any register in the RMC70, up to 16 registers per plot, sampled as fine as the control loop resolution.

#### ▲ Autotuning Wizard

Quickly and accurately tune your axes, using a slider bar to choose from a range of gains appropriate for your system.

#### ▲ Event Log

Speed troubleshooting by recording events such as parameter changes, commands, errors, and communications.

#### ▲ Program Monitor

Monitor User Program execution and variables.

### Programming

#### ▲ Commands

Issue commands directly from RMCTools. Use Command Shortcut Sets to quickly issue commands to speed up the tuning process.

#### ▲ User Programs

Easily create programs to issue sequences of commands.

#### ▲ Program Triggers

Start user programs automatically based on user-defined events such as discrete inputs, error conditions, etc.

#### ▲ Mathematical Expressions

Expressions provide flexible programming capability for advanced calculations and machine control sequences.

# RMC70 Control Features

The RMC70 provides an extensive set of motion commands and programming capability for quick and easy yet flexible motion control for virtually every motion application.

## Control Modes

- ▲ **Closed Loop Control**  
Full PID loop control with velocity, acceleration, and jerk feed forwards for precise synchronized motion. Directional gain factors support fluid power control.
- ▲ **Position Control**
  - ▲ Point-to-Point moves
  - ▲ S-curves
  - ▲ Speed at Position
  - ▲ Gearing
  - ▲ Cyclic Sinusoidal Motion
  - ▲ Splines, Cams
  - ▲ Rotary motion (incremental and absolute)
- ▲ **Velocity Control**
  - ▲ Velocity control with position feedback
  - ▲ Velocity control with velocity feedback
- ▲ **Pressure and Force Control**
  - ▲ Pressure sensor, load cell, or differential force
  - ▲ Linear or S-curve Ramps
  - ▲ Gearing
  - ▲ Cyclic Sinusoidal Profile
  - ▲ Splines, Cams
- ▲ **Position-Pressure and Position-Force Control**
  - ▲ Transition seamlessly between position control and pressure or force control.
  - ▲ Pressure or Force Limit – limit the pressure or force during a position or velocity move.
- ▲ **Active Damping**  
For high-performance control of pneumatics and difficult systems.
- ▲ **Open Loop Control**  
Seamless transition from open loop to closed loop. Ramp Control Output between two values, or ramp based on position for hard-to-control systems.
- ▲ **Quick Move**  
Move in open loop and stop in closed loop for fast, smooth motion with accurate stops.
- ▲ **Valve Linearization**  
For valves with a sharp knee or “kink” in the flow versus command signal diagram.
- ▲ **Custom Feedback**  
Control using any calculated value as feedback.
  - ▲ Sum, difference, average, etc.
  - ▲ Switch feedback on-the-fly
  - ▲ Redundant feedback
  - ▲ Feedback linearization

## High-level Programming

- ▲ **User Programs**  
Programs are easy-to-understand sequences of commands. Run multiple programs simultaneously to handle axis commands and machine control functions.
- ▲ **Program Triggers**  
Start user programs automatically based on user-defined events such as discrete inputs, error conditions, etc.
- ▲ **Variables**  
Recipes and other user parameters can be stored for use by user programs.
- ▲ **Mathematical Expressions**  
Expressions provide flexible programming capability for advanced calculations and machine control sequences.

## Troubleshooting and Monitoring

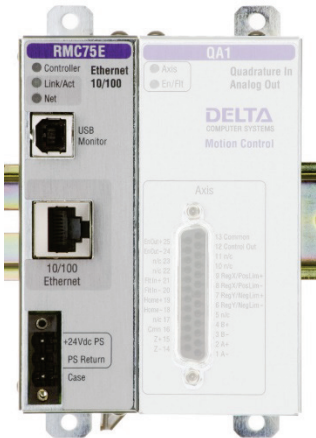
- ▲ **Plots**  
Plot any register in the RMC70, up to 16 registers per plot, sampled down to the control loop resolution.
- ▲ **Event Log**  
Speeds troubleshooting by recording events such as parameter changes, commands, errors, and communications.

## Fault Handling

- ▲ **Closed Loop stops**  
Ramp speed to zero at a specified rate and hold position.
- ▲ **Open Loop stops**  
Ramp output voltage to zero at a specified rate.
- ▲ **Multi-axis (group) stops**  
A fault on one axis halts multiple axes when configured as a group.
- ▲ **AutoStops**  
The response of axes to each fault type is easily configurable.

# RMC70 Base Module: CPU Choices

The RMC70 CPU portion of the Base module contains the communications and the central processing unit. The initial CPU offering is the RMC75 with support for one or two axes of motion, up to four Expansion modules, and Delta Motion's easy-to-use Step Editor for user programs. The RMC75 CPU modules differ only in the communication type. In addition to the power input and primary communications port, each RMC70 CPU module contains a Monitor Port intended for communication with RMCTools. On the RMC75E, this is a USB port. The RMC75E can also connect to RMCTools via Ethernet. On the RMC75P and RMC75S CPU modules, the Monitor Port is an RS-232 serial port.



RMC75E CPU Module



RMC75P CPU Module

## Available CPU Modules

Part Number	Primary Communication Type	Monitor Port
RMC75E	Ethernet	USB
RMC75P	PROFIBUS-DP	Serial (RS-232)
RMC75S	Serial (RS-232/485)	Serial (RS-232)

## Specifications Common to All Base Modules

### Motion Loop Time

Control loop time	User-selectable: RMC75E: 0.25 to 4 ms RMC75S/P: 0.5 to 4 ms
-------------------	---

### Power

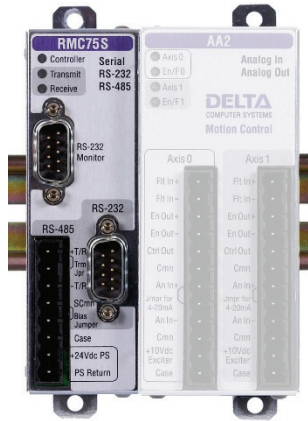
Voltage	+24Vdc ±20%
Current – Base module	Typ. 200mA @ 24Vdc, max 375mA
with 4 Expansion modules	Typ. 350mA @ 24Vdc, max 500mA
DC-DC converter isolation	500Vac input to the controller

### Mechanical

Mounting	Symmetrical DIN 3 or panel-mount
Dimensions – Base module	3.22 x 5.0 x 2.75 in (WxHxD)
with 4 Expansion modules	up to 9.22 x 5.0 x 2.75 in, width varies (23.4 x 12.7 x 6.4 cm)
Weight – Base module	Up to 0 lb 12 oz (0.4 kg)
with 4 Expansion modules	Up to 2 lb 0oz (0.9 kg)

### Environment

Operating temperature	+32 to +140°F (0 to +60°C)
Storage temperature	-40 to +185°F (-40 to +85°C)
Agency compliance	UL, CUL, CE



RMC75S CPU Module

## RMC75E – Ethernet Communication

The RMC75E provides the processing power of the RMC75 series motion controllers and includes Ethernet communications. The RMC75E has a USB Monitor port for convenient connection to a PC running RMCTools (the RMC75S and RMC75P use an RS-232 serial port for the same purpose). The RMC75E can also connect to RMCTools via Ethernet.

The RMC75E supports auto-negotiation for 10/100 Mbps and full/half duplex and also supports auto-crossover detection.

Supported protocols include:

- ▲ EtherNet/IP
- ▲ PROFINET
- ▲ Modbus/TCP
- ▲ CSP (DF1 over Ethernet)
- ▲ FINS (Omron)
- ▲ Procedure Exist (Mitsubishi Q-series)

## RMC75P – PROFIBUS-DP Communication

PROFIBUS is a vendor-independent, open fieldbus designed especially for communicating between programmable controllers and distributed I/O such as the RMC70 Series motion controller. Up to 126 nodes can be connected to a single network.

The RMC75P module supports data rates up to 12Mbaud, permitting high-speed on-the-fly downloads of positions, parameters, and commands to the RMC75 and high-speed uploads of motion profile and status information to the host controller. The RMC75P PROFIBUS-DP interface gives the flexibility of several operating modes. Select the mode that best fits your application and PROFIBUS-DP master's capabilities.

**Tip:** If your PC does not have a serial port, use the USB-to-serial cable listed on page 19 for setting up the RMC75P.

## RMC75E Specifications

Ethernet Interface	
Hardware interface	IEEE 802.3 for 100BASE-T (twisted pair)
Data Rate	10/100 Mbps
Duplex	Full/Half-Duplex
Features	Auto-negotiation, Auto-crossover (MDI/MDI-X)
Connector	RJ-45
Cable	CAT5, CAT5e or CAT6, UTP or STP
Configuration	
Configuration parameters	IP address, subnet mask, gateway address, enable/disable auto-negotiation
Configuration methods	BOOTP or manually using RMCTools
Protocol Support	
Framing protocol	Ethernet II
Internet protocol	IP (includes ICMP, ARP, and Address Collision Detection)
Transport protocols	TCP, UDP
Application protocols	Modbus/TCP, CSP, EtherNet/IP, PROFINET, Omron FINS, Procedure Exist (Mitsubishi Q-series) (Call Delta Motion for the availability of other protocols)
USB Monitor Port	
Connector	USB "B" receptacle
Data Rate	Full-speed (12 Mbps)

## RMC75P Specifications

PROFIBUS-DP Interface	
Data rate	9.6 kbaud up to 12 Mbaud
Isolation	2500Vac
Ident. Number	0x07E1
Features supported	Sync mode, freeze mode, auto baud rate detect
Valid station addresses	0-99 (set by rotary switches on the faceplate)
Connector	
PROFIBUS-DP connector	Standard PROFIBUS-DP DB-9 (use termination in cable connectors as per PROFIBUS specification)
RS-232 Monitor Port	
Connector	DB-9 Male
Cable	Null modem
Protocol	Allen-Bradley DF1 Full-Duplex, with CRC error detection
Settings	38400 baud, 8 data bits, no parity, 1 stop bit, no handshaking

## RMC75S – Serial Communication

The RMC75S combines multiple communication protocols with RS-232 and RS-485 transceiver options to form a versatile and industrial-hardened communication platform. The RS-232 option provides full-duplex point-to-point communications, while RS-485 allows half-duplex multi-drop networking with up to 127 RMC70s.

Due to the limited throughput of serial communications, the RMC75S is best suited for applications where time-critical machine control functions related to motion are implemented in the RMC75S using the RMC70 User Programs. The serial communications work well for low-bandwidth monitoring or modifications to the RMC75S parameters or User Program variables. In applications where higher throughput is necessary, consider one of Delta Motion's other RMC70 CPU choices.

**Tip:** If your PC does not have a serial port, use the USB-to-serial cable listed on page 19 for setting up the RMC75S.

## RMC75S Specifications

### Protocol Support

Allen-Bradley DF1 (full- and half-duplex)	Supported by Allen-Bradley PLCs and other products
Modbus/RTU	Supported by Modicon PLCs and other products
Bidirectional Protocol	Supported by Mitsubishi Q-series

### Serial Interface

Transceivers	RS-232 or RS-485, user selectable
Baud rates	9600, 19200, 38400, 57600, 115200 baud
Protocol options	Data length: 8-bit Parity: none, odd, or even Stop bits: 1 or 2 Flow control: none or hardware (CTS/RTS)

Isolation	500Vac
Electrostatic Discharge (ESD) protection	15kV

### RS-232 Interface

Type	Single-ended RS-232
Connector	DB-9
Communication distance	50 ft (12 m)
Network type	Point-to-Point

### RS-485 Interface

Type	Differential RS-485
Connector	Unpluggable Terminal Block
Communication distance	4000 ft (1200 m)
Network type	Point-to-Point or Multi-drop up to 128 nodes
RS-485 input impedance	48k $\Omega$ (1/4-unit load)
Biasing	User selectable
Termination	120 $\Omega$ user selectable

### RS-232 Monitor Port

Connector	DB-9 Male
Cable	Null modem
Protocol	Allen-Bradley DF1 Full-Duplex, with CRC error detection
Settings	38400 baud, 8 data bits, no parity, 1 stop bit, no handshaking

# RMC70 Base Module: Axis Choices

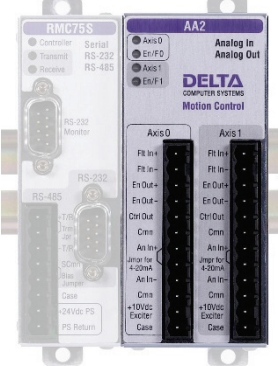
## One- and Two-Axis Actuator and Feedback Interfaces

The Axis module portion of the Base module holds the actuator and feedback interfaces of the RMC70 Series motion controller.

Each factory-installed Axis module is available with one or two control axis interfaces.



MA1 Axis Module



AA2 Axis Module



QA1 Axis Module

Axis Modules	AA1	AA2	MA1	MA2	QA1	QA2
Axes	1	2	1	2	1	2
Feedback Interface*	Analog (16-bits), $\pm 10V$ or 4-20mA		MDT (Start/Stop or PWM), SSI		Quadrature Encoder (A, B, Z) 5V diff.	
Control Output*	Analog: $\pm 10V$ , 5mA max, 16-bit **					
Fault Input*	Optically-isolated discrete input, 12-24Vdc					
Enable Output*	Optically-isolated SSR output, 12-24V					

\* One per axis

\*\* Use Delta Motion's VC2124 voltage-to-current converter to provide a current output. The VC2124 output range is adjustable from  $\pm 10$  mA to  $\pm 200$  mA in 10 mA steps.

### Specifications Common to All Axis Modules

#### General

Electrostatic Discharge (ESD) protection 15kV

#### Fault Input

Input type 12-24Vdc; sinking (sourcing driver)

Logic polarity User selectable to Active Input "High" or Active Input "Low"

Isolation 500Vac

Input "High" range 7 to 26.4Vdc (polarity independent), 3mA maximum

Input "Low" range 0 to 3.5Vdc (polarity independent), <1mA

Maximum propagation delay 100  $\mu$ sec

#### Enable Output

Output type Solid State Relay

Logic polarity User selectable to Active Open or Active Closed

Isolation 500Vac

Rated voltage 12-24V, max  $\pm 30V$  (DC or peak AC voltage)

Maximum current  $\pm 75$ mA

Maximum propagation delay 2.0 ms

Closed Low impedance (50  $\Omega$  maximum)

Open High impedance (<1  $\mu$ A leakage current at 250V)

#### Environment

Operating temperature +32 to +140°F (0 to +60°C)

Storage temperature -40 to +185°F (-40 to +85°C)

Agency compliance UL, CUL, CE

#### Power Requirements

All Axis modules are powered by the RMC70 controller. The user must supply power to the transducers. Refer to the manufacturer's specifications for the transducer power requirements.



## AA1 and AA2

The AA1 and AA2 Axis modules generate analog control outputs and interface to position or pressure feedback transducers with the following characteristics:

- ▲ **Voltage:**  $\pm 10V$
- ▲ **Current:** 4-20mA

The AA1 and the AA2 modules control one and two axes respectively. Each axis may be independently configured for interface to a voltage-output or current-output transducer. Each axis has an isolated 12-24Vdc discrete Fault Input and an isolated 12-24V SSR Enable Output.

AAx modules can be used for position or pressure/force control. Position–pressure or position–force control requires the AP2 expansion module.

## AA1 and AA2 Specifications

<b>Control Output</b>	
Output	$\pm 10V$ , 5mA maximum, 16-bit
<b>Analog Interface</b>	
Inputs	One 16-bit input per axis
Oversampling	8 times per control loop
Input ranges	$\pm 10V$ and 4-20mA (each axis independently configured)
Input impedance	5M $\Omega$
Input filter slew rate	25V/ms (100mA/ms)
Effective Resolution	19-bit over the full $\pm 10V$ range (18-bit for 0-10V and $\pm 5V$ , 17-bit for 0-5V) 16-bit for 4-20mA
Offset drift with temperature	0.2 LSB/ $^{\circ}C$ typical
Gain drift with temperature	20 ppm/ $^{\circ}C$ typical
Non-linearity	12 LSB (counts) typical
Exciter Output	10Vdc $\pm 2\%$ , 8mA maximum
<b>Discrete I/O*</b>	
Fault Input	Optically-isolated discrete input, 12-24Vdc
Enable Output	Optically-isolated SSR output, 12-24V, max $\pm 30V$ (DC or peak AC voltage)

\* See Axis Common Specification for details

## MA1 and MA2

The MA1 and MA2 Axis modules generate analog control outputs and interface to position feedback transducers with the following characteristics:

- ▲ **Magnetostrictive Displacement Transducer (MDT):**  
RS-422 Pulse Width Modulated (PWM) or Start/Stop, with programmable edge response
- ▲ **Synchronous Serial Interface (SSI):**  
MDT, or single- or multi-turn absolute encoders with the SSI interface  
**Note:** Linear MDTs with SSI output should be of the synchronized type. Non-synchronized is not well-suited for motion control.

The MA1 and MA2 Axis modules control one and two axes respectively. Each axis has a 16-bit,  $\pm 10V$  analog Control Output, an isolated 12-24Vdc discrete Fault Input, and an isolated 12-24V SSR Enable Output. Each axis may be independently configured for interface to either an MDT or SSI transducer.

MAx modules can be used for position control. Position–pressure or position–force control requires the AP2 expansion module.

## MA1 and MA2 Specifications

### Control Output

Output  $\pm 10V$ , 5mA maximum, 16-bit

### MDT Interface

Transducer types	MDT with Start/Stop or PWM (Pulse Width Modulated) feedback
Return input	RS-422 differential
Interrogation output	RS-422 differential (External interrogation transducers are required for motion control)
Resolution	0.0005" with 1 recirculation
Recirculations	Supports multiple recirculations only for PWM transducers with internal recirculations.
Maximum transducer length	440" at 4ms (loop time dependent)
Count rate	240MHz

### SSI Interface

Transducer types	MDT, single-turn, or multi-turn absolute encoders <b>Note:</b> Linear MDTs with SSI output should be of the synchronized type. Non-synchronized is not well-suited for motion control.
Motion Type	Linear or Rotary
Data input	RS-422 differential
Clock output	RS-422 differential
Clock frequency	150kHz, 250kHz, or 375kHz, user-selectable
Resolution	Transducer dependent (typically down to 2 $\mu$ m or approximately 0.00008" for MDTs)
Count encoding	Binary or Gray Code
Count data length	4 to 32-bits

### Discrete I/O\*

Fault Input	Optically-isolated discrete input, 12-24Vdc
Enable Output	Optically-isolated SSR output, 12-24V, max $\pm 30V$ (DC or peak AC voltage)

### Cable Requirements

Maximum SSI cable length	230-1000 ft (70-300 m) dependent on transducer and clock frequency
Cable type	Twisted pair, shielded, low capacitance

\* See Axis Common Specification for details

## QA1 and QA2

The QA1 and QA2 axis modules, with 5V differential (RS-422) quadrature inputs and analog  $\pm 10V$  control outputs, allow cost-effective control of a wide variety of electric drives as well as electric and hydraulic servo motors.

The QA1 and QA2 axis modules generate analog control outputs and interface to quadrature encoders with 5V differential (RS-422) signals. Additional high-speed inputs allow for homing, registration, or positive and negative limits on a per axis basis.

The QA1 and the QA2 modules control one and two axes respectively. QA $x$  modules can be used for position control. Position–pressure or position–force control requires the AP2 Expansion module.

Take advantage of the RMC70's superior tuning and diagnostics by operating drives and amplifiers in their simplest mode, thereby transferring control to the RMC70. Doing this can lower long term maintenance costs by avoiding obsolescence issues common to many smart drives.

### Cables

Cables for the QA modules are available for purchase from Delta Motion. See page 19 for details.

## QA1 and QA2 Specifications

### Control Output

Output	$\pm 10V$ , 5mA maximum, 16-bit
--------	---------------------------------

### Quadrature Interface (per Axis)

Inputs	per axis: 5V differential (RS-422) receiver for A, B, and Z signals (Single-ended encoders are not supported due to low noise immunity)
--------	---

Input impedance	215 $\Omega$
-----------------	--------------

Max Encoder Frequency	8,000,000 quadrature counts/second
-----------------------	------------------------------------

### High-Speed Registration and Home Inputs

High-Speed Inputs	per axis: 1 Home Input 1 Registration X or Positive Limit Input 1 Registration Y or Negative Limit Input
-------------------	---

Input "High" range	7 to 26.4Vdc (polarity independent), 3mA maximum
--------------------	---

Input "Low" range	0 to 3.5Vdc (polarity independent), <1mA
-------------------	---

Response Time	40 $\mu s$
---------------	------------

### General Discrete I/O\*

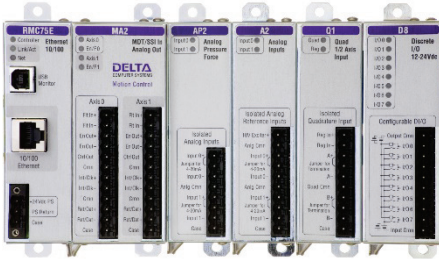
Fault Input	Optically-isolated discrete input, 12-24Vdc
-------------	--

Enable Output	Optically-isolated SSR output, 12-24V, max $\pm 30V$ (DC or peak AC voltage)
---------------	---

\* See Axis Common Specification for details

# Exp70 Expansion Modules

For use with RMC70 Series Motion Controllers



Up to four Expansion modules (Exp70) can be added to an RMC70 motion controller to bring additional capabilities to the controller. The Exp70-A2 adds analog reference inputs, and the Exp70-AP2 adds analog inputs intended for use as pressure/force inputs as part of Delta Motion’s powerful position–pressure/force control feature. The Exp70-D8 module adds discrete I/O functionality, and the Exp70-Q1 adds a 1/2–axis quadrature encoder input allowing multiple RMC70s to be electronically geared to a common master axis.

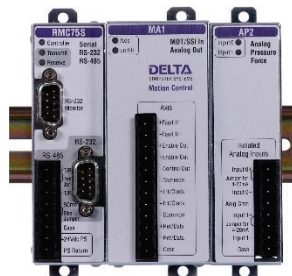
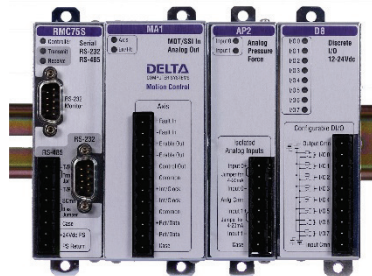
RMC70 Series motion controllers consist of a factory-configured Base module with one or two control axes, plus up to four field-installable Expansion modules. Each Expansion module can be added quickly by simply plugging it into an open expansion connector and securing it with four screws. No backplane is required—the first Expansion module plugs onto the right side of the Base module, and each subsequent Expansion module plugs into the previous Expansion module. Each Exp70 module has its own din-rail locking lever so the entire assembly can be securely mounted. The assembly may also be panel mounted.

## Available Expansion Modules

Order Number	Features
<b>EXP70-A2</b>	Two ±10V or 4-20mA differential analog reference inputs. Inputs are 16-bit resolution and are optically isolated from the controller.
<b>EXP70-AP2</b>	Two ±10V or 4-20mA differential analog inputs for use in position–pressure/force control axes. Inputs are 16-bit and are optically isolated from the controller.
<b>EXP70-D8</b>	Eight discrete I/O individually configurable for any combination of inputs or outputs. Inputs and outputs are 12-24Vdc rated, polarity independent, and optically isolated from the controller.
<b>EXP70-Q1</b>	One 5V differential (RS-422) quadrature encoder input (A and B) with selectable termination. The RMC70 supports up to two Q1 modules.

## Specifications Common to Expansion Modules

Mechanical	
Operating temperature	+32 to +140°F (0 to +60°C)
Storage temperature	-40 to +185°F (-40 to +85°C)
Agency compliance	UL, CUL, CE
Power Requirements	
All Expansion modules are powered by the RMC70	



## Exp70-A2 Expansion Module



The A2 module adds two analog reference inputs for position, velocity, pressure, or force (single-input or dual-input differential) feedback. The A2 interfaces to transducers with the following characteristics:

- ▲ **Voltage:** ±10V
- ▲ **Current:** 4-20mA

Each 16-bit input of the A2 can be individually configured to interface to voltage or current output

transducers.

The A2 generates a 10Vdc exciter output, which eliminates a precision power source in some potentiometer applications. This low noise reference also provides the accuracy benefits of ratiometric tracking.

## Exp70-AP2 Expansion Module



The AP2 module adds two analog inputs for pressure, force (single-input or dual-input differential), or acceleration feedback, and is required for control algorithms using two inputs, such as position–pressure, position–force, velocity–pressure, velocity–force, active damping, and acceleration control.

The AP2 interfaces to transducers with the following characteristics:

- ▲ **Voltage:** ±10V
- ▲ **Current:** 4-20mA

Each 16-bit input of the AP2 can be individually configured to interface to voltage or current output transducers.

**The AP2 is required for dual-loop control, such as position–pressure or position–force.**

## A2 Specifications

### Analog Interface

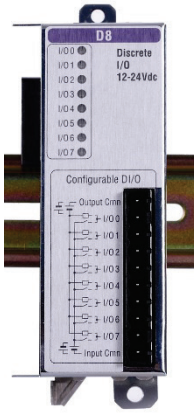
Inputs	Two 16-bit differential
Isolation	500Vac
Overvoltage protection	±40V
Input ranges	±10V and 4-20mA (each channel independently configured)
Input impedance	5MΩ
Input filter slew rate	25V/ms
Oversampling	8 times per control loop
Effective Resolution	19-bit over the full ±10V range (18-bit for 0-10V and ±5V, 17-bit for 0-5V) 16-bit for 4-20mA
Offset drift with temperature	0.2 LSB/°C typical
Gain drift with temperature	20 ppm/°C typical
Non-linearity	12 LSB (counts) typical over the full 16-bit range
Exciter Output	10Vdc ± 2%, 8 mA

## AP2 Specifications

### Analog Interface

Inputs	Two 16-bit differential
Isolation	500Vac
Overvoltage protection	±40V
Input ranges	±10V and 4-20mA (each channel independently configured)
Input impedance	5MΩ
Input filter slew rate	25V/ms
Oversampling	8 times per control loop
Effective Resolution	19-bit over the full ±10V range (18-bit for 0-10V and ±5V, 17-bit for 0-5V) 16-bit for 4-20mA
Offset drift with temperature	0.2 LSB/°C typical
Gain drift with temperature	20 ppm/°C typical
Non-linearity	12 LSB (counts) typical over the full 16-bit range

## Exp70-D8 Expansion Module



The D8 adds eight discrete inputs or outputs rated for 12-24Vdc. Up to 32 I/O may be added if all four Expansion modules are D8s.

Each I/O can be individually configured in software as an input or output. Inputs and outputs are polarity independent. However, since there is just one input common and one

output common, all inputs must be the same polarity, and all outputs must be the same polarity, but inputs need not be the same polarity as outputs. That is, outputs can switch high side or low side, and the inputs can be operated with either polarity signals.

Inputs and outputs are 12-24Vdc rated and optically isolated from the controller. Since all inputs share a common connection, there is no isolation between input points. Likewise, all outputs share a common pin and therefore do not have isolation between outputs.

The D8 can be used for the following purposes:

- ▲ Control discrete outputs from User Programs
- ▲ Control User Program flow based on discrete I/O state
- ▲ Start User Program tasks based on discrete inputs

## D8 Specifications

### Discrete I/O

Inputs and Outputs	8; each is individually configurable as an input or output.
Groups	All inputs (up to 8) are in one group, and all outputs (up to 8) are in one group. Each group shares a common pin.

### Inputs

Input type	12-24Vdc; sinking (sourcing driver)
Logic polarity	True "High"
Isolation	500Vac
Input "High" range	7 to 26.4Vdc (polarity independent), 3mA maximum
Input "Low" range	0 to 3.5Vdc (polarity independent), <1mA
Maximum propagation delay	100 $\mu$ sec

### Outputs

Output type	Solid State Relay (SSR)
Isolation	500Vac
Rated voltage	12-24V, max $\pm$ 30V (DC or peak AC voltage)
Maximum current	$\pm$ 75mA
Maximum propagation delay	2.0 ms
Logic 1 (True, On)	Low impedance (50 $\Omega$ maximum)
Logic 0 (False, Off)	High impedance (<1 $\mu$ A leakage current at 250V)

## Exp70-Q1 Expansion Module



The Q1 module adds one 5V differential (RS-422) quadrature encoder reference input for position feedback. Inputs include quadrature A and B, plus one 12-24Vdc high-speed registration input.

The A and B inputs have selectable termination allowing up to 32 Exp70-Q1 modules to be daisy-chained with only the last input terminated. This

allows up to 64 slave axes to be electronically geared to one master quadrature signal.

## Q1 Specifications

### Quadrature Encoder Interface

Inputs	5V RS-422 differential receiver Quadrature A, B (Single-ended encoders are not supported due to low noise immunity)
Input Impedance	16k $\Omega$ unterminated 215 $\Omega$ terminated (selectable by jumpers)
Max Encoder Frequency	8,000,000 quadrature counts/sec
Daisy-Chaining	Daisy-chain one encoder to a maximum of 32 Q1 modules

### High-Speed Registration Input

Input "High" range	7 to 26.4Vdc (polarity independent), 3mA maximum
Input "Low" range	0 to 3.5Vdc (polarity independent), <1mA
Reg Input Response Time	40 $\mu$ sec

# RMC70 Series Wiring

**Note:** For detailed wiring diagrams, see the RMC70 Startup Guide or the RMCTools help.

## RMC75E CPU Module

### Ethernet (RJ-45)

Twisted pair cable CAT5, CAT5e or CAT6, UTP, or STP conforming to IEEE 802.3 for 100BASE-T must be used.

### Power Terminal Block

Pin	Label	Function
1	+24Vdc PS	+24Vdc power
2	PS Return	Isolated power common
3	Case	Chassis ground

### Monitor Port (USB “B” Connector)

Accepts a standard USB cable to communicate with a PC running RMCTools.

## RMC75P CPU Module

### PROFIBUS-DP

Standard PROFIBUS-DP cabling must be used.

### Power Terminal Block

Pin	Label	Function
1	+24Vdc PS	+24Vdc power
2	PS Return	Isolated power common
3	Case	Chassis ground

### Monitor Port

Accepts a null-modem DB-9 female-to-female cable to communicate with a PC running RMCTools.

## RMC75S CPU Module

### RS-232 (DB-9)

Pin	Function
2	Received data
3	Transmitted data
5	Serial common
7	Request to Send (RTS)
8	Clear to Send (CTS)

### RS-485 Terminal Block

Pin	Label	Function
1	+ T/R	Tx/ Rx B (+)
2	Trm Jpr	Jumper to +T/R for termination
3	- T/R	Tx/ Rx A (-)
4	SCmn	Isolated serial common
5	Bias Jumper	Jumper to SCmn for bias
6	Case	Chassis ground

### Power (shared connector with RS-485)

Pin	Label	Function
6	Case	Chassis ground
7	+24Vdc PS	+24Vdc power
8	PS Return	Isolated power common

### Monitor Port

Accepts a null-modem DB-9 female-to-female cable to communicate with a PC running RMCTools.

## MAxAxis Module

One connector per axis:

Pin	Label	Function	
1	+ Fault In	Fault Input (12-24Vdc)	
2	- Fault In		
3	+ Enable Out	Enable Output (12-24Vdc)	
4	- Enable Out		
5	Control Out	Control Output ( $\pm 10V$ )	
6	Common		
		MDT	SSI
7	+ Int/Clock	+ Interrogate	+ Clock
8	- Int/Clock	- Interrogate	- Clock
9	Common	Common	Common
10	+ Ret/Data	+ Return	+ Data
11	- Ret/Data	- Return	- Data
12	Case	Chassis ground	

**Note:** Pins 6 and 9 are electrically the same.

## AAxAxis Module

One connector per axis:

Pin	Label	Function
1	+ Fault In	Fault Input (12-24Vdc)
2	- Fault In	
3	+ Enable Out	Enable Output (12-24Vdc)
4	- Enable Out	
5	Control Out	Control Output ( $\pm 10V$ )
6	Common	
7	+ Anlg In	Analog input (For 4-20mA, jumper pins 7 and 8)
8	Jmpr for 4-20mA	
9	- Anlg In	
10	Common	Analog common
11	+ 10Vdc Exciter	Exciter output for use with potentiometers
12	Case	Chassis ground

**Note:** Pins 6 and 10 are electrically the same.



# Wiring *continued*

**Note:** For detailed wiring diagrams, see the RMC70 Startup Guide or the RMCTools help.

## QAx Axis Module

One connector per axis:

Pin	Label	Function
1	A-	A- from encoder (5V signal)
2	A+	A+ from encoder (5V signal)
3	B-	B- from encoder (5V signal)
4	B+	B+ from encoder (5V signal)
5	n/c	No connection
6	RegY/NegLim-	Registration Y or Negative Limit (12-24Vdc)
7	RegY/NegLim+	
8	RegX/PosLim-	Registration X or Positive Limit (12-24Vdc)
9	RegX/PosLim+	
10	n/c	No connection
11	n/c	No connection
12	Control Out	Control Output ( $\pm 10V$ )
13	Common	
14	Z-	Index pulse from encoder (5 V signals)
15	Z+	
16	Cmn	Common
17	n/c	No connection
18	Home-	Home Input (12-24Vdc)
19	Home+	
20	- Fault In	Fault Input (12-24Vdc)
21	+ Fault In	
22	n/c	No connection
23	n/c	No connection
24	- Enable Out	Enable Output
25	+ Enable Out	

**Note:** Pins 13 and 16 are electrically the same.

## Exp70-A2 Expansion Module

Pin	Label	Function
1	10V Exciter+	Exciter output for use with potentiometers
2	Anlg Cmn	Isolated analog common
3	Input 0+	Analog input 0 (For 4-20mA, jumper pins 3 and 4)
4	Jumper for 4-20mA	
5	Input 0-	
6	Anlg Cmn	Isolated analog common
7	Input 1+	Analog input 1 (For 4-20mA, jumper pins 7 and 8)
8	Jumper for 4-20mA	
9	Input 1-	
10	Case	Chassis Ground

**Note:** Pins 2 and 6 are electrically the same.

## Exp70-AP2 Expansion Module

Pin	Label	Function
1	Input 0+	Analog input 0 (For 4-20mA, jumper pins 1 and 2)
2	Jumper for 4-20mA	
3	Input 0-	
4	Anlg Cmn	Isolated analog common
5	Input 1+	Analog input 1 (For 4-20mA, jumper pins 5 and 6)
6	Jumper for 4-20mA	
7	Input 1-	
8	Case	Chassis ground

## Exp70-D8 Expansion Module

Pin	Label	Function
1	Output Cmn	Common to one side of all outputs
2	I/O 0	Input or output 0
3	I/O 1	Input or output 1
4	I/O 2	Input or output 2
5	I/O 3	Input or output 3
6	I/O 4	Input or output 4
7	I/O 5	Input or output 5
8	I/O 6	Input or output 6
9	I/O 7	Input or output 7
10	Input Cmn	Common to one side of all inputs

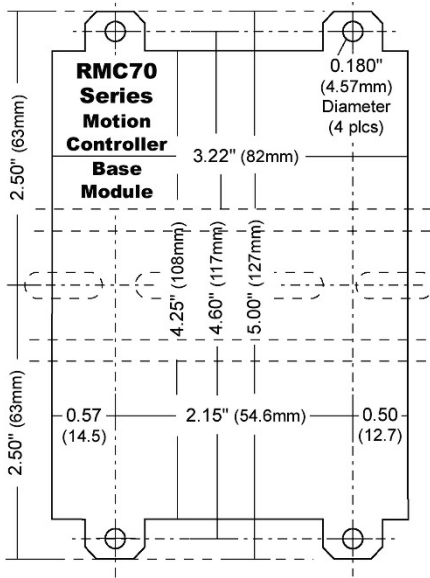
## Exp70-Q1 Expansion Module

Pin	Label	Function
1	Reg In+	High-speed registration or home input
2	Reg In-	
3	A+	Encoder A Input (to enable termination, jumper pins 3 and 4*)
4	Jumper for Termination*	
5	A-	
6	Cmn	Common
7	B+	Encoder B Input (to enable termination, jumper pins 7 and 8*)
8	Jumper for Termination*	
9	B-	
10	Case	Chassis ground

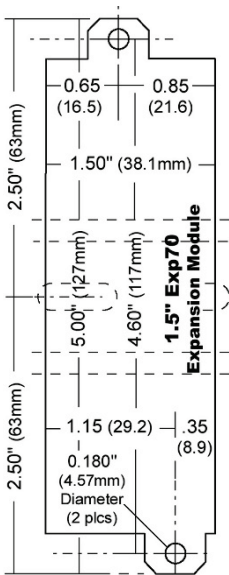
\* Use either both jumpers or no jumpers

# RMC70 Series Dimensions

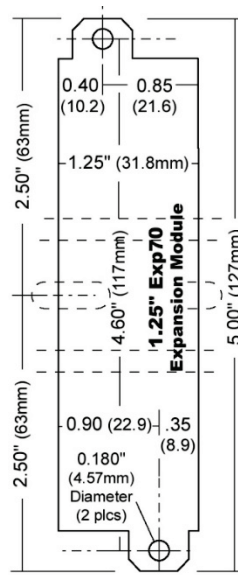
## RMC70 Base Module Series Mounting Dimensions



## D8 Mounting Dimensions



## AP2, A2, Q1 Mounting Dimensions



Drawings are not at 1:1 scale.

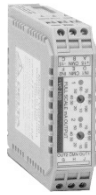
## Voltage-to-Current Converters

Delta Motion's voltage-to-current converters are designed for converting a voltage drive output to a current drive output in order to control a servo valve. Delta Motion offers several voltage-to-current converters to fit your needs. The maximum output current is adjustable in increments of 10 mA up to the maximum output current range.

Part Number	Description	Output Current Range*	Power Supply
VC2124	2-channel voltage-to-current converter	±100mA per channel	24Vdc
VC2100	2-channel voltage-to-current converter	±100mA per channel	±15Vdc
VC2100-HS	2-channel voltage-to-current converter – high speed**	±100mA per channel	±15Vdc



**VC2124**



**VC2100**



**VC2100-HS**

\* Channels can be connected in parallel to provide higher current. For example, two ±100 mA channels connected in parallel will provide ±200 mA.

\*\* Most hydraulic control applications do not require a high-speed converter.

## USB-to-Serial Cable for RMC75S and RMC75P

Setting up the RMC75S and RMC75P requires connecting a PC to the RMC's RS-232 serial port. For PCs with no serial port, Delta Motion recommends the Startech ICUSB232FTN USB-to-serial cable. This 5.6 ft cable with a built-in converter may be purchased from Delta Motion. Part number: **RMC-CB-USB-SERIAL-01**

## Cable Assemblies

Delta Motion provides cable assemblies for certain products.

Cable Part No	Length	Cable Description
RMC-CB-QUAD-01-06	6 ft.	
RMC-CB-QUAD-01-10	10 ft.	Cable for QA module. 1 DB25 to 3 individual pig-tailed cables for drive, encoder, and limits.
RMC-CB-QUAD-01-15	15 ft.	
RMC-CB-QUAD-01-20	20 ft.	

Custom lengths are available per request. A drawing of RMC-CB-QUAD-01-xx is available on the Downloads page of Delta Motion's website at [deltamotion.com/downloads](http://deltamotion.com/downloads).



## Terminal Blocks

All RMCs ship with screw-terminal connectors. Connectors are also available for order from Delta Motion as listed below. These parts are also available from connector manufacturer Amphenol Pcd using these part numbers.

Connector Part No	Connector Description	For Modules
ELFT03260E (Amphenol Pcd)	3-pin terminal block with screw terminals	RMC75E, RMC75P
ELFT08260 (Amphenol Pcd)	8-pin terminal block with screw terminals	RMC75S, AP2
ELFT10260 (Amphenol Pcd)	10-pin terminal block with screw terminals	A2, D8
ELFT12260 (Amphenol Pcd)	12-pin terminal block with screw terminals	AA, MA



Spring-clamp terminal blocks are available from connector manufacturer Metz Connect, series ASP046.

# Connect. Control. Optimize.



[deltamotion.com](http://deltamotion.com)